

China International Import Expo

Participation Guide

March 29 to 31, 2012

Kunshan Convention & Exhibition
Center, China

Secretariat of China International Import Expo

August 2011

Contents

Chapter 1 Introduction.....	3-6
Chapter 2 Application.....	7-9
Chapter 3 Expo Services.....	10-19
1. Custom-Built Stand Construction	10-12
2. Transportation Service.....	12-14
3. Invitation for Visa Application	15-16
4. Advertisement and Publicity.....	16-17
5. Air Ticket and Hotel Reservation, Business Investigation.....	17-18
6. Traffic Guide	18-19
Chapter 4 Appendices.....	19-21

Chapter 1 Introduction

1. Name

China International Import Expo (hereinafter referred to as CIE2012)

2. Organization

(1) Supported by:

International Chamber of Commerce (ICC)

(2) Sponsored by:

China Chamber of International Commerce

Jiangsu People's Government

(3) Organized by:

Secretariat of China Chamber of International Commerce

Department of Commerce of Jiangsu Province

China Council for the Promotion of International Trade, Jiangsu

Sub-Council

Suzhou People's Government

Kunshan People's Government

(4) Undertaken by:

Secretariat of China International Import Expo (Secretariat of China Chamber of International Commerce, China Council for the Promotion of International Trade, Jiangsu Sub-Council)

3. Date and Venue

March 29-31, 2012

Kunshan Convention & Exhibition Center (No. 388, East Qianjin Road, Kunshan, China)

4. Schedule

Content	Date	Time	Venue
Registration, Stand setting-up and exhibits move-in	March 26- 28, 2012	08:30—17:00	Registration Hall
Exhibition	March 29-31, 2012	09:00—17:00 (exhibitors)	Exhibition Hall
		9:30—16:30 (trade visitors)	
Stand Dismantling and exhibits move-out	March 31, 16:00—April 1 17:00, 2012		

5. Recommended Service Providers (See Chapter 3 for contact details)

Item	Recommended Service Providers	Details
Construction and management of exhibition hall	Beijing Huayang Hengtong International Convention & Exhibition Service Co., Ltd	Construction and refitting of standard stands, drawing verification of custom-built stands, application for water, electricity and gas, construction management, rental of exhibition

		furniture and equipment and other on-site services
Recommended Custom-built stand Construction	Beijing Huayang Hengtong International Convention & Exhibition Service Co., Ltd Jiangsu Huihong Exhibition Engineering Co., Ltd	Custom-built Stand Construction
Logistics service for exhibition hall & Recommended exhibits transportation agency	Jiangsu Feiliks International Logistics Inc	International exhibit transportation agency, storage, customs clearance for import/export, inspection and quarantine for entry/exit, on-site portage
Recommended Travel service	Suzhou China International Travel Service Co., Ltd	Hotel and air ticket reservation, business trip arrangement etc.

6. Contact Us (Secretariat of China International Import Expo)

China Council for the Promotion of International Trade, Jiangsu

Sub-Council

Address: 4F, International Trade Building, No.50, Zhonghua Road,
Nanjing, China

Tel: 0086 – 25-52856743 0086 – 25-52856781

Fax: 0086 – 25-52856751

Contact: Jiang Rongxin, Ming Jing

E-mail: k.jiang@jsccpit.gov.cn, mingjing@jsccpit.gov.cn

Secretariat of China Chamber of International Commerce

Address: Plaza of International Chamber of Commerce, No. 2,
Huapichang Lane, Xicheng District, Beijing, China

Tel: 0086-10-82217882 Fax: 0086-10-82217898

Contact: Wang Xinze

E-mail: wangxinze@ccoic.cn

Chapter 2 Application

1. Specification of Stands

Stands are classified into standard stands and custom-built stands. Standard stands (3m x 3m, 2.5m in height) refer to the stands built with materials of uniform specifications according to a uniform pattern, including Chinese and English lintel plate, one information desk, two collapsible chairs, one waste-paper basket and carpet, two 100W long-arm spot lights, and one 5A/220V socket. Custom-built stands refer to the stands specially built on reserved raw space with non-standard materials.

Options	Unite Price
Raw Space for Custom-built stands (Minimum 36 sqm)	US \$240/ sqm
Standard Booth	US \$2,500/booth

Attachment: Standard Stand and Facilities



2. Requirements for Exhibitor Participation

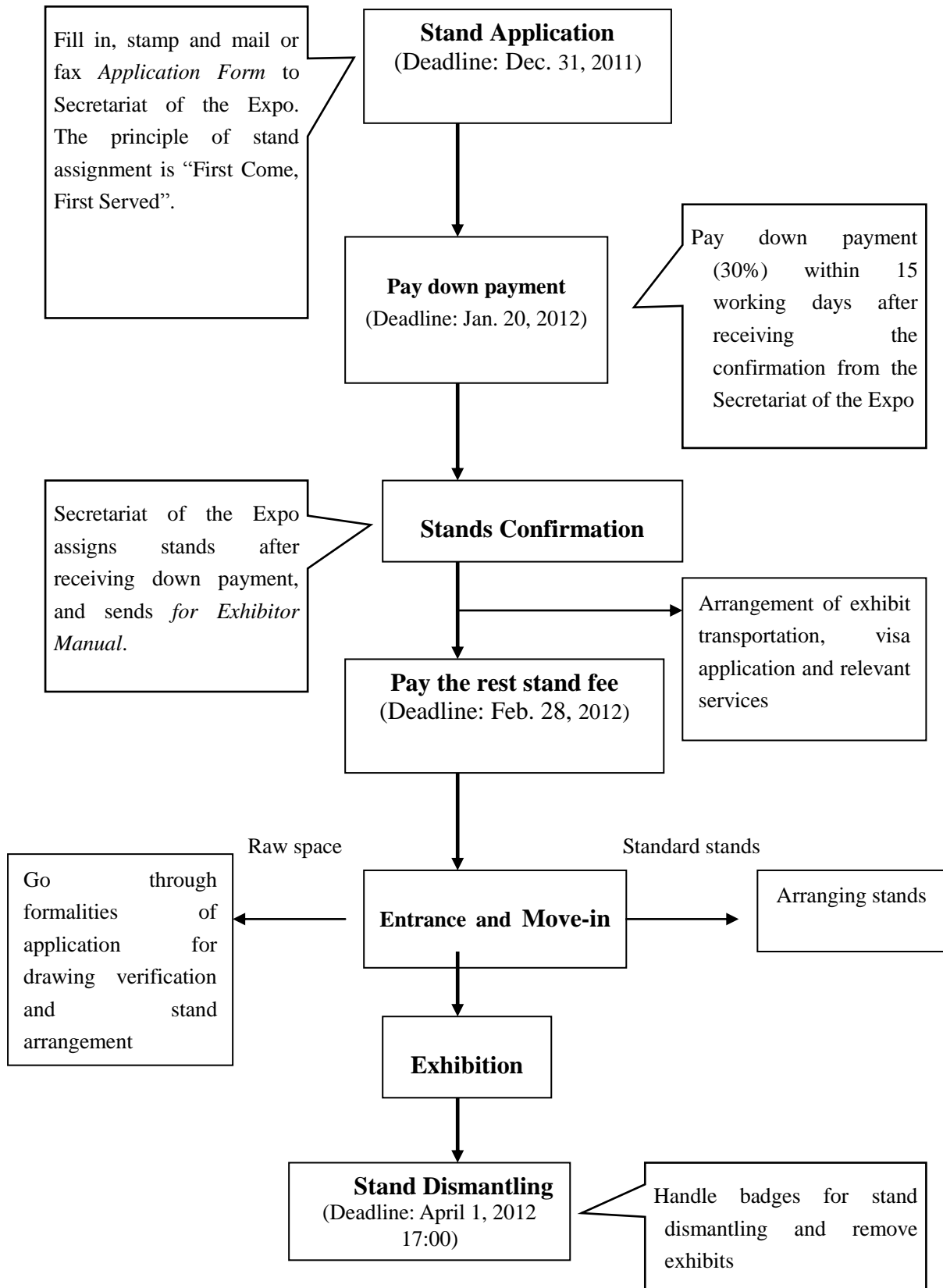
1). The exhibitors shall be companies legally registered over three years ago (including three years) in countries or regions other than Mainland China in accordance with applicable laws, with copies of registration certificate or other valid certificates provided.

2). The exhibits, packages, publicity materials as well as the designs and patents concerning all the exhibited contents shall be subject to the protection of Chinese Intellectual Property Law.

3). The exhibitors shall abide by the laws and regulations of the People's Republic of China, and ensure that the exhibits, packages, publicity materials and all exhibited contents do not conflict with relevant laws and regulations of China and infringe upon others' intellectual property rights.

4). The exhibitors shall accept and abide by relevant provisions stipulated in *Participation Guide for China International Import Expo*, and their exhibits shall be within the *Scope of Exhibits of China International Import Expo*.

3. Procedures for Exhibitor Participation

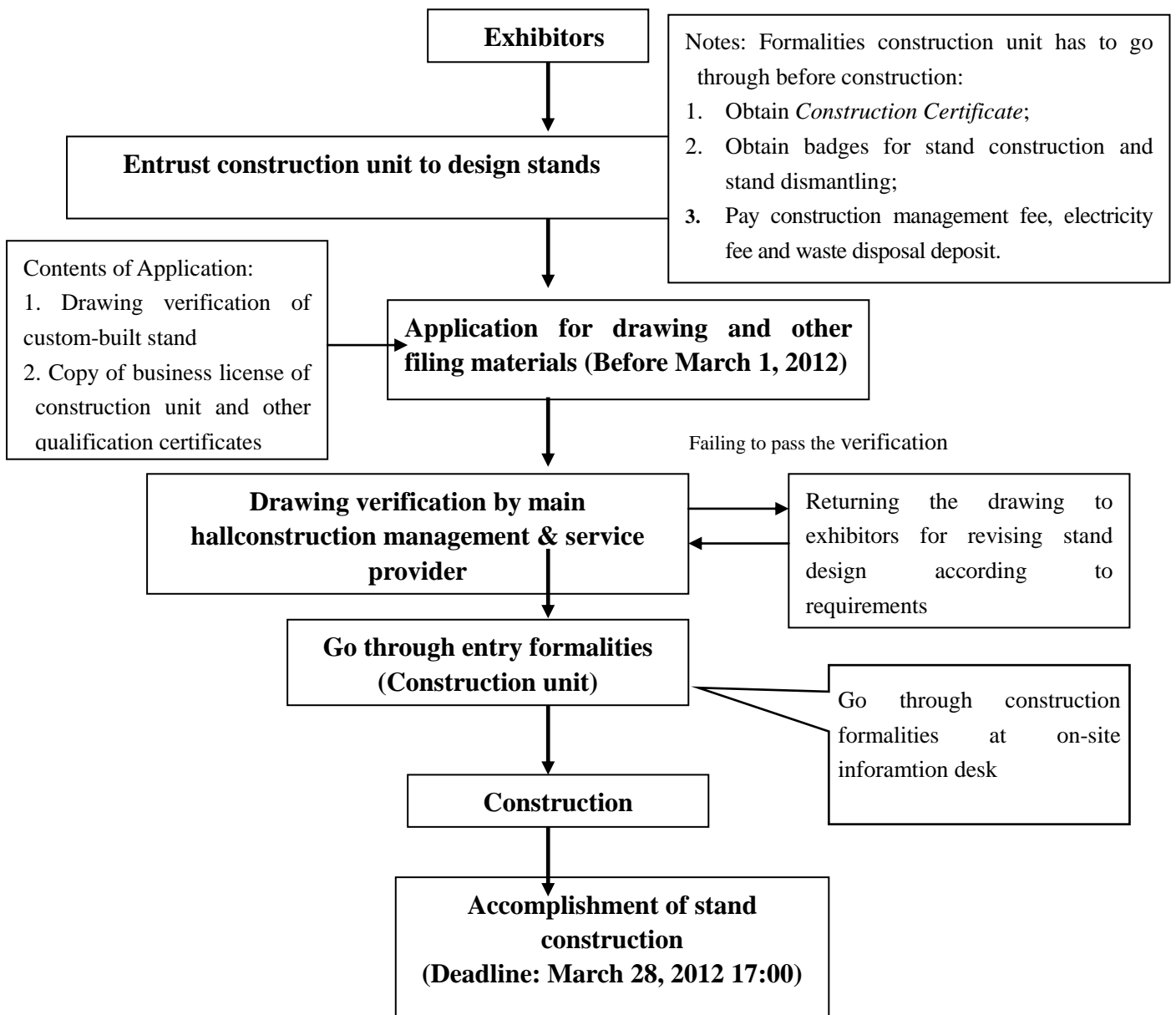


Chapter 3 Expo Services

1. Service of Custom-built Stand Construction

The exhibitors renting raw space for building custom-built stands may entrust the recommended custom-built stand construction service providers of the Exposition or select other service providers. The design, construction and dismantling of custom-built stands shall conform to relevant laws, regulations and provisions about fire fighting with prior application to designated main hall construction management & service provider of the Exposition.

(1). Application procedures for custom-built stand construction:



(2) Recommended custom-built stand construction service provider

1). Beijing Huayang Hengtong International Convention & Exhibition Service Co., Ltd (main hall construction management & service provider)

Address: Room 2301, Building No. 18, Jian Wai SOHO West District, East 3rd Ring Middle Road, Chaoyang District, Beijing,

China

Tel: 010-59000808

Fax: 010-59000606

Contact: Luo Zhaohua 13901292040 Gu Biao 138111012498

E-mail: hyht-ad@163.com

2). Jiangsu Huihong International Exhibition Decoration Engineering
Co., Ltd

Address: No. 2, Taipingmen Street, Nanjing, China

Tel: 025-84661232, 84661218

Fax: 025-84661230, 84800155

Contact: Zhao Chang, Qiao Xin

E-mail: 284825582@qq.com, 11367301@qq.com

2. Transportation Service

(1). Exhibits Transportation

Exhibitors may deliver exhibits to China and back to their home countries in the following four ways, and shall submit the *List of Exhibits* to the logistics service provider for exhibition hall of the Expo- Jiangsu Feiliks International Logistics Inc through their respective transport agencies before February 10, 2012, for filing, statistics and inspection at entrance/exit of the exhibition halls.

1). The exhibitor may entrust the recommended transporter of China International Import Expo to provide “Gate to Gate” One-Stop Service which will include overseas collection of exhibits, overseas transportation,

customs clearance, quarantine and inspection, local transportation, storage, exhibits portage on exhibition stands, related procedures for different methods of disposing exhibits subsequent to exhibition, customs cancellation subsequent to verification, re-transportation of the exhibits out of the territory to the exhibitors' locality.

2). Exhibitor may entrust his own transporters locally to deliver the exhibits to Shanghai Port where these exhibits will be transferred to the Recommended Transporter who will offer services such as customs clearance, quarantine and inspection, local transportation, storage, exhibits portage, related procedures for different methods of disposing exhibits subsequent to exhibition, customs cancellation subsequent to verification, re-transportation of the exhibits out of the territory to the exhibitors' locality. Please note that relevant entrust procedure is required in advance.

3). The exhibitor may arrange his own transporter for the entire process, but it is suggested to contact with the recommended transporter in advance and go through the entrustment formalities so that the recommended transporter will offer services such as customs clearance, customs cancellation, storage, custom inspection, exhibits portage for the service from Shanghai Port to the exhibition hall.

4). For exhibits imported by express delivery, the nominated receiver must be the transporter recommended. Please specify as the exhibit of China International Import Expo.

During the stand construction and stand dismantling and

exhibition time, the portage of exhibits in the exhibition halls shall be undertaken by the recommended transporter.

(2). Recommended exhibit transportation agency

Jiangsu Feiliks International Logistics Inc. (main hall logistics service provider)

Address: No. 999, Meigui Road, Kunshan Economic & Technological Development Zone, Jiangsu, China

Contact: Julia Wang (ocean shipping)

Tel: 86(21)-33772370

Fax: 86(21)-33772308/33772318

E-mail: Julia_wang@feiliks.com

Callin Zhao (air transport)

Tel: 86 (21) 6884 1096

Fax: 86(21) 6885 2951 / 6885 2953

E-mail: callin_zhao@feiliks.com

3. Invitation for Visa Application

International exhibitors shall obtain the business visa issued by embassy of China in corresponding countries for participation in the exhibition in China. Secretariat of China International Import Expo(China Chamber of International Commerce or China Council for the Promotion of International Trade, Jiangsu Sub-Council) will provide international exhibitors with invitation.

(1). Instructions

1). International exhibitors are suggested to go through visa application formalities one month in advance. The exhibitors having obtained invitation shall go through visa application formalities with the embassy of China in corresponding countries with invitation, the passport with validity period of over half a year, visa application form (available at the embassy of China in corresponding countries) that has been filled in and passport photos.

2). Invitation will be faxed to the applicant within seven working days after down payment is received.

(2) Contact Us

Secretariat of China International Import Expo

China Council for the Promotion of International Trade, Jiangsu Sub-Council

Address: 4F, International Trade Building, No. 50, Zhonghua Road, Nanjing, China

Tel: 0086 – 25-52856747

Fax: 0086 – 25-52856751

Contact: Jin Huan

E-mail: jinhuan@jsccpit.gov.cn

4. Advertisement and Publicity

A great variety of publicity forms will be available for exhibitors to improve their image and expand their influence.

(1) Forms of advertisements and publicity

Form	Contents
Catalogue	Chinese and English introduction of Enterprises in Catalogue (within 400 words), color page advertisements
On-site advertisement	Advertisements on arches, balloons, billboards, ceiling display, flag banners, massive pillars
Advertisement on badges	Advertisements on the back or cord of exhibitor badges, visitor badges, badges for stand construction and stand dismantling and other badges
Publicity on Internet	Advertisements on dedicated website of the Exposition
New product release conference	Exhibitors may hold new product release conference during the Exposition, and Office of China International Imported Products Exposition will assist

	in inviting professional listeners.
--	-------------------------------------

Notes: Advertisements above (except the Chinese and English introduction in catalogue) will be charged.

(2). Contact Us

For details, please contact Secretariat of China International Import Expo.

Secretariat of China International Import Expo

China Council for the Promotion of International Trade, Jiangsu
Sub-Council

Address: 4F, International Trade Building, No. 50, Zhonghua Road,
Nanjing, China

Tel: 0086 – 25-52856792

Fax: 0086 – 25-52856751

Contact: Chen Li

E-mail: chenli@jsccpit.gov.cn

5. Air Ticket and Hotel Reservation, Business Investigation

The secretariat of China International Import Expo recommends Suzhou China International Travel Service Co., Ltd to offer travel service such as air ticket and hotel reservation and business investigation services.

Suzhou China International Travel Service Co., Ltd

Address: No. 18, Dajing Lane, Guanqian Street, Suzhou

Contact: Lu Guangxing Zhang Zhishen

Tel: 0512-65221940 0512-65152401

Mobile Phone: 13306213323

Fax: 0512-65159006

E-Mail: pbilu@yahoo.com

6. Traffic Guide

(1). Airport ↔ Kunshan International Expo Center

Kunshan International Expo Center has Kunshan Terminal to go to/from Shanghai Pudong Airport and Shanghai Hongqiao Airport. The distance to Shanghai Hongqiao Airport is 35 km and the distance to Shanghai Pudong Airport is 80 km.

EXPO Secretariat will arrange shuttle buses to pick up exhibitors at Shanghai Pudong Airport and send them to the exhibition halls from March 26 to March 28.

(2) Railway Station ↔ Kunshan International Expo Center:

Bus Line No. 106, No. 107 (round trip): Railway Station—Terminal (Kunshan International Expo Center) — International Exhibition Hall (Kunshan International Expo Center)

(3) High-speed Railway Station ↔ Kunshan International Expo Center:

Bus Line No. 16 (round trip): New Passenger Station- High-speed Railway Station—Xie'en Clinic (Kunshan International Expo Center)

(4) Long-distance Bus Station (New Passenger Station) ↔ Kunshan International Expo Center:

Bus Line No. 16 (round trip): New Passenger Station—Xie'en Clinic

(Kunshan International Expo Center)

Appendix 1: Technical Parameters of Exhibition Halls

Facilities	Specification
Main exhibition hall	About 52,000 m ² (excluding garage), 12,000 m ² for exhibition halls A, B, C and D each
Main visitor entrance	Two for each exhibition hall, 4.0x2.4m
Main exhibit entrance	Two for each exhibition hall at the east or west side, 4.0x6m 5.2x6.0m
Auxiliary exhibit entrance	Ten for each exhibition hall, 4.6-4.85x4.24m
Power supply volume	Illumination at each exhibition hall, 850KW
Power supply mode	3-phase 5-wire system, power source: 3-phase 380V, lighting power supply: single-phase 220V 50HZ
Compressed air	Available
Lighting of exhibition hall	Natural lighting and lighting by equipment
Clear height of exhibition hall	8-15m
Weight bearing	2.5 ton/m ² and single item shall not exceed 20 tons

of floor	in weight
Water supply and drainage	Available
Fire-fighting system	Fire hydrant, spray, fire-fighting monitor
Air-conditioner	Available
Internet	Available
Broadcasting system	Available
Emergency lighting	Available
Parking space	F1, 2500 parking spaces

Appendix 2: Chart of Pavilion Function Distribution

